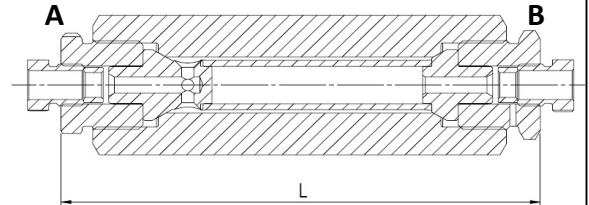
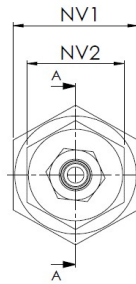


# IN LINE FILTERS 1500 bar (90110)

Operating pressure:	1500 bar/21.500 psi
Temperature:	-40°C to +130°C
Material body:	AISI316L
Filtration:	5 µm, 98 % filtration
Connections:	Cone and Thread connection
Tests:	EN10266-1 P10, 2250 bar water
Compliance:	PED (2014/68/EU)



Flowdirection A to B

Catalogue number	SIZE ["]	L [mm]	NV1 [mm]	NV2 [mm]	Kv
90110 3/8	3/8"	158	41	32	0,65
90110 9/16	9/16"	164	41	36	0,65
90110 3/4	3/4"	278	60	50	1,3
90110 1	1"	298	60	50	1,3

Datasheet subject to change without notice

Revision 1

